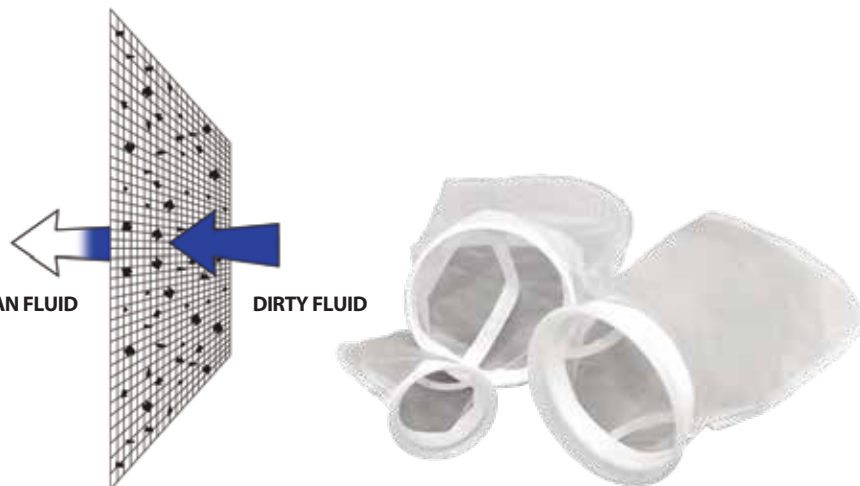




## Standard Mesh Liquid Filter Bag Monofilament and Multifilament

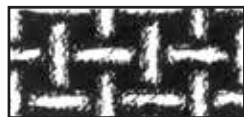
- Micron ratings from 1 to 1500
- All industry standard and custom sizes available
- High flow/low pressure drop media
- Surface-retention filtration
- Broad chemical compatibility
- Sewn construction and welded flange construction
- Handles standard on all bags
- Different ring/flange styles are available
- Economical removal of non-deformable contaminants
- Non-fiber releasing
- Temperature ratings to 180°F (POMO), 275°F (NMO & PEMU) and 350°F (NMO)
- Polyester and nylon materials meet FDA regulations for contact under CFR21, section 177.1520
- Silicone-free construction



### Mesh Bag Materials



**Multifilament Mesh** media is woven from threads made of smaller fibers. Bags made from this material are low cost and disposable.



**Monofilament Mesh** is woven from single-fiber threads. The openings are square and uniform. Bags made from this material have excellent strength.

### Mesh Bag Styles

Steel-ring bags have a galvanized steel ring (stainless steel optional) sewn into the top of the bag. They are supplied with sewn seams standard.

Plastic flange bags have a specially-designed flange sewn to the top of the bag. They are supplied with sewn seams standard (welded collars available upon request).

| Mesh Materials                    |   |   |    |    |    |    |    |    | Micron Ratings |     |     |     |     |     |     |     |     |     |      |      |
|-----------------------------------|---|---|----|----|----|----|----|----|----------------|-----|-----|-----|-----|-----|-----|-----|-----|-----|------|------|
|                                   | 1 | 5 | 10 | 25 | 35 | 45 | 55 | 75 | 100            | 125 | 150 | 175 | 200 | 250 | 300 | 400 | 600 | 800 | 1000 | 1500 |
| NMO = Nylon Monofilament          | • | • | •  | •  | •  | •  | •  | •  | •              | •   | •   | •   | •   | •   | •   | •   | •   | •   | •    | •    |
| POMO = Polypropylene Monofilament |   |   |    |    |    |    |    |    | •              |     | •   |     | •   | •   | •   | •   | •   | •   |      |      |
| NMU = Nylon Multifilament         |   |   |    |    |    |    |    |    | •              |     | •   |     | •   | •   | •   | •   | •   | •   |      | •    |
| PEMU = Polyester Multifilament    |   |   |    |    |    |    |    |    | •              |     | •   |     | •   | •   | •   | •   | •   | •   |      | •    |

### Ordering Information

| Media Type                        | Micron Rating | Bag Dimensions |       |        | Ring/Flange Styles      | Options                                      |
|-----------------------------------|---------------|----------------|-------|--------|-------------------------|--|
|                                   |               | Size           | Diam. | Length |                         |  |
| NMO = Nylon Monofilament          | See Chart     | P1             | 7"    | 16"    | S = Galvanized Steel    | H = Handle (Standard on all ring style bags) |
| POMO = Polypropylene Monofilament | See Chart     | P2             | 7"    | 32"    | SS = Stainless Steel    | EB = Edge Binding                            |
| NMU = Nylon Monofilament          | See Chart     | P3             | 4"    | 8"     | PP = Polypropylene Ring | A = Auto Seams                               |
| PEMU = Polyester Multifilament    | See Chart     | P4             | 4"    | 14"    | T = Titanium Ring       | TTA = Turn, Top Stich, Auto Seam             |
|                                   |               | P5             | 4"    | 24"    | P = P Flange            | RC = Reverse Collar                          |
|                                   |               | P7             | 5.5"  | 15"    | F = F Flange            |  |
|                                   |               | P8             | 5.5"  | 21"    | OSS = OSS Flange        |  |
|                                   |               | P9             | 5.5"  | 31"    | DS = Draw String        |  |
|                                   |               | P11            | 8.5"  | 16"    | NR = No Ring            |  |
|                                   |               | P12            | 8.5"  | 30"    |                         |  |
|                                   |               | C1             | 7.3"  | 16.5"  |                         |  |
|                                   |               | C2             | 7.3"  | 32.5"  |                         |  |
|                                   |               | RP1            | 8"    | 30"    |                         |  |
|                                   |               | RP2            | 8"    | 40"    |                         |  |
|                                   |               | PC1            | 9"    | 20"    |                         |  |
|                                   |               | PC2            | 9"    | 30"    |                         |  |
|                                   |               | X1             | 4.3"  | 8"     |                         |  |
|                                   |               | X2             | 4.3"  | 14"    |                         |  |
|                                   |               | X01            | 6"    | 20"    |                         |  |

**Example:**  
NMO100P2P-A

Media Type: NMO    Micron Rating: 100    Bag Dimension: P2    Ring Style: P    Options: - A