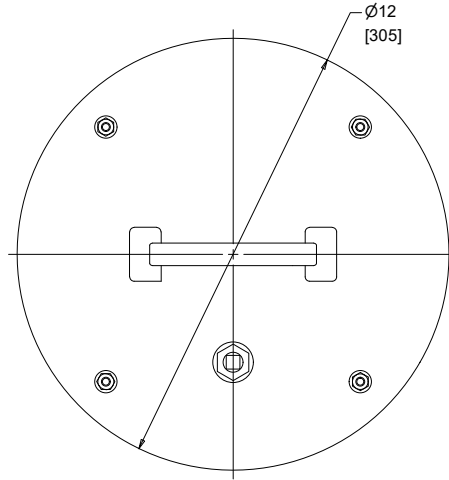
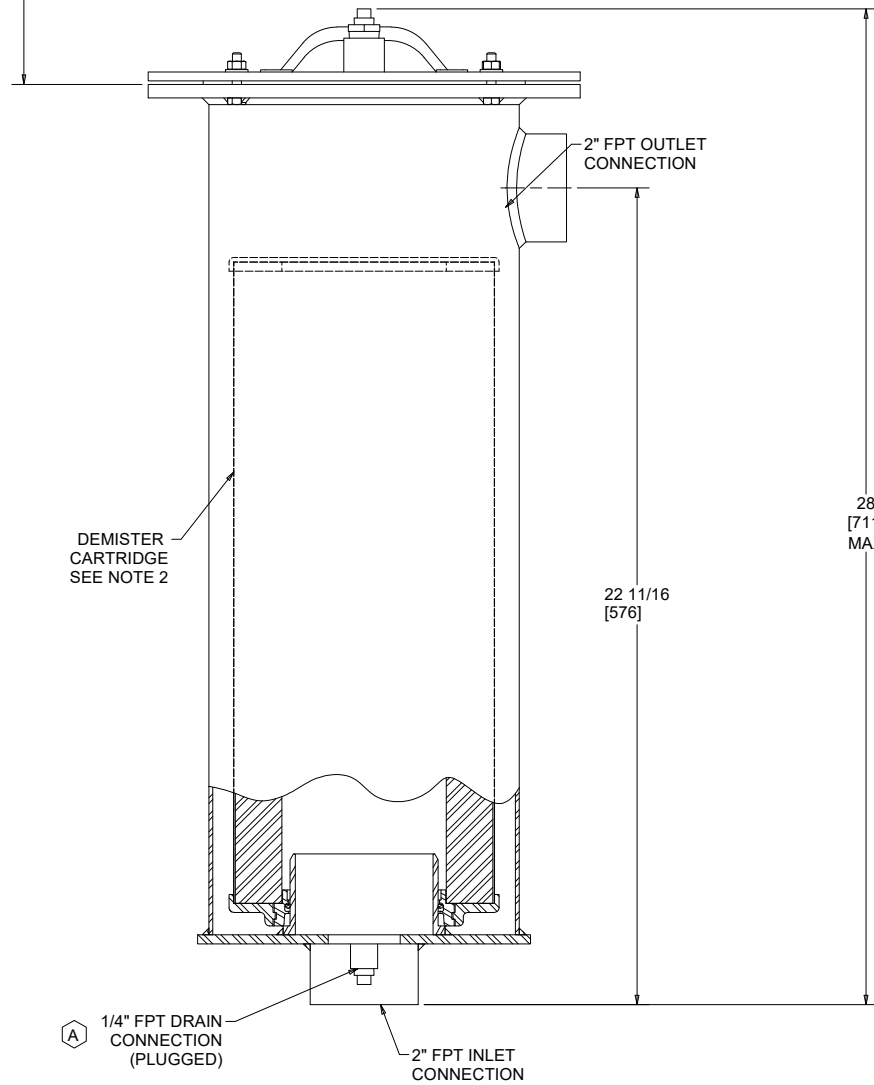


APPROX. DRY WEIGHT: 30 LBS [13.6 KG]  
 APPROX. COVER WEIGHT: 7 LBS [3.2 KG]  
 MAX. DESIGN PRESSURE: 15 PSI  
 COVER ASSEMBLY: 0352-00-645 B

- NOTES:
1. 18 13/16 [478] HEADROOM REQUIRED FOR CARTRIDGE REMOVAL.
  2. FILTER CARTRIDGE AS SPECIFIED ON ORDER.



SEE NOTE 1



D

D

C

C

B

B

A

A

THIS DOCUMENT CONTAINS PROPRIETARY INFORMATION AND SUCH INFORMATION SHALL NOT BE DISCLOSED TO ANY OTHER PERSON WITHOUT THE WRITTEN PERMISSION OF THE HILTI GROUP. ALL RIGHTS RESERVED.

UNLESS OTHERWISE SPECIFIED, DIMENSIONS ARE IN INCHES. FRACTIONS: XX - 1/32. DECIMALS: .XX - 1/32. MODEL: 1-127

UNLESS OTHERWISE SPECIFIED, DIMENSIONS ARE IN MILLIMETERS. FRACTIONS: XX - 1/32. DECIMALS: .XX - 1/32. MODEL: 1-127

THE HILTI CORPORATION  
 100 WEST FORTYTH STREET  
 LEBRON, NEW YORK, NY 10006

APPROVED: HCR 8/27/1986

CHECKED: HCR 8/27/1986

DRAWN: JIM 8/19/2006

DATE: 8/19/2006

BY: JIM

DATE: 8/19/2006

BY: HCR

DATE: 8/27/1986

BY: HCR

DATE: 8/27/1986

THE INFORMATION AND DATA HEREIN ARE THE PROPERTY OF HILTI CORPORATION. ALL RIGHTS RESERVED.

ASME Y14.5M 1994

UNLESS OTHERWISE SPECIFIED, DIMENSIONS ARE IN INCHES. FRACTIONS: XX - 1/32. DECIMALS: .XX - 1/32. MODEL: 1-127

UNLESS OTHERWISE SPECIFIED, DIMENSIONS ARE IN MILLIMETERS. FRACTIONS: XX - 1/32. DECIMALS: .XX - 1/32. MODEL: 1-127

UNLESS OTHERWISE SPECIFIED, DIMENSIONS ARE IN MILLIMETERS. FRACTIONS: XX - 1/32. DECIMALS: .XX - 1/32. MODEL: 1-127

UNLESS OTHERWISE SPECIFIED, DIMENSIONS ARE IN MILLIMETERS. FRACTIONS: XX - 1/32. DECIMALS: .XX - 1/32. MODEL: 1-127

REV	DESCRIPTION	DATE	BY	APP
B	COVER ASSEMBLY WAS	10/14/08	SJR	ML
A	DRAWN WAS ON FAR SIDE	4/22/03	RRT	RRT
LTR	DESCRIPTION	BY	DATE	APP

**PRODUCTION**

GENERAL ASSEMBLY  
 HILCO OIL MIST ELIMINATOR  
 MODEL: 01ME01-30820401

SCALE: 3/8

SHEET 1 OF 1

3082-04-001-C

4

3

2

1

4

3

2

1